

Butterfly Bingo

A game of bingo based on the butterflies in our Butterfly House

1. Cut out the squares below, put them in a bag. Choose a bingo caller.
2. Cut out the four bingo cards and hand out to the other players.
3. Hand out some game markers — use circles of paper (draw around coins), counters or sweets.
4. The bingo caller takes a square from the bag and shows it to the other players. If they have the butterfly they cover up that square.
5. The bingo caller continues to take a square from the bowl or bag until a player completes their square and calls out 'Butterfly Bingo'.



White Morpho



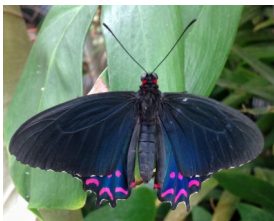
Owl Butterfly



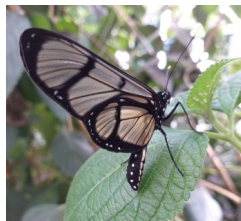
Doris Longwing (blue)



Scarlet Peacock



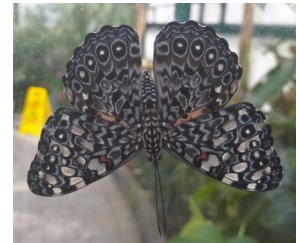
Pink-spotted Cattleheart



Giant Glasswing



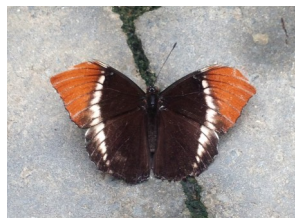
Malachite



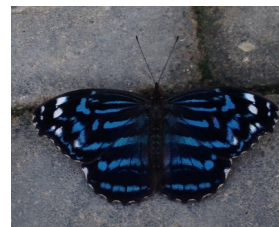
Variable Cracker



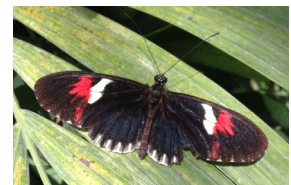
Doris Longwing



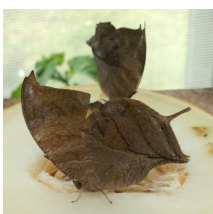
Rusty-tipped Page



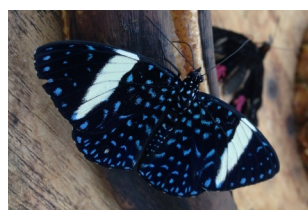
Mexican Bluewing



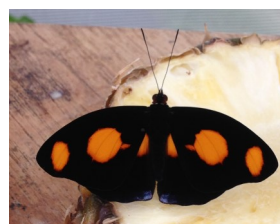
Longwing



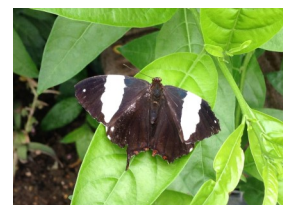
Leafwing



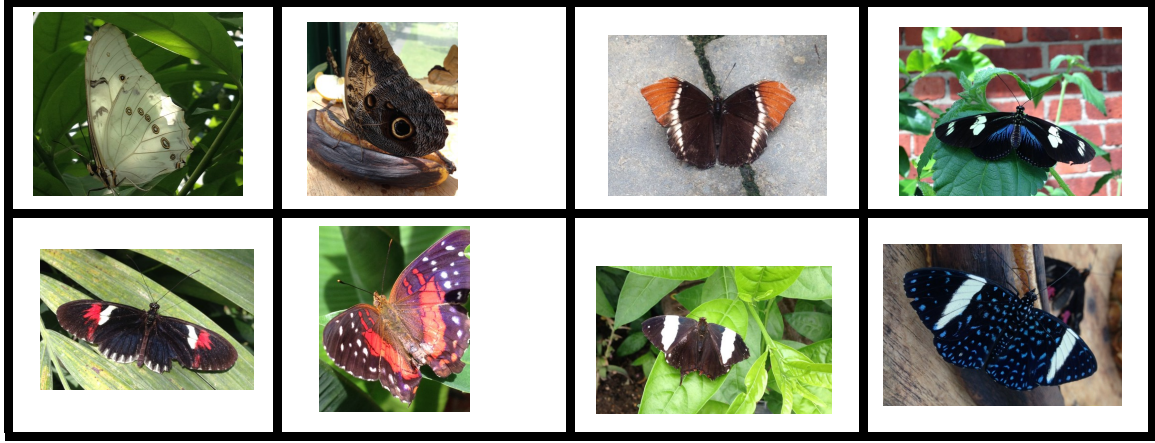
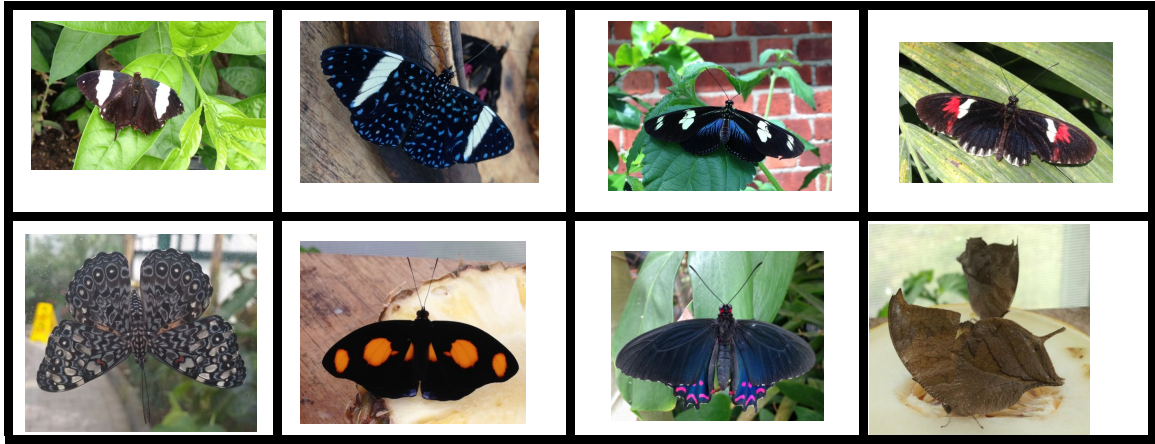
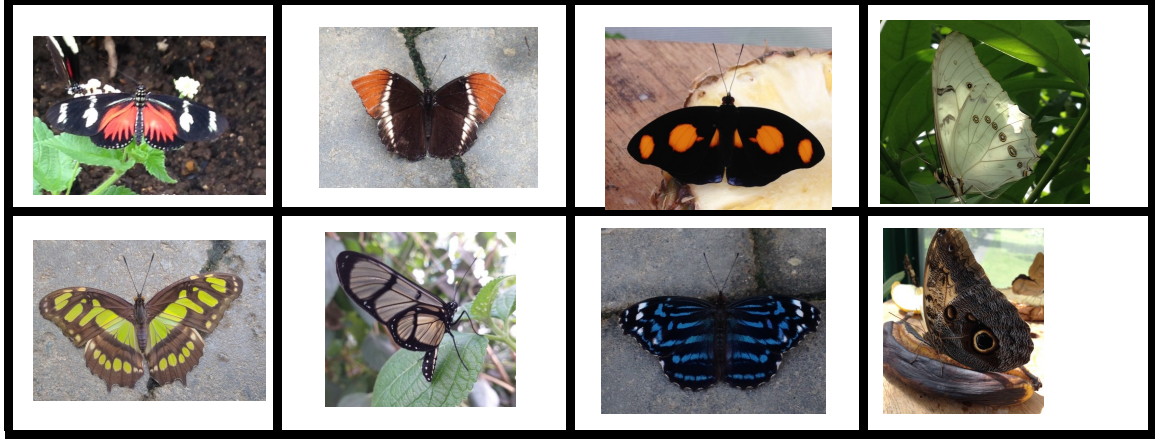
Starry Night Cracker



Grecian Shoemaker



Grecian Shoemaker female



Portsmouth Natural History Museum

4 Bingo Cards